

# Deepchill™ Compact System

## Functions

- Production and delivery of deepchill™ slurry with crystal concentration of up to 40%
- Storage of deepchill™ slurry in a 1.5 m<sup>3</sup> insulated storage tank

## Onboard Benefits

- Rapid chilling of large volume of fish in the stocker ponds (measured at 1°C per minute)
- Colder/firmer fish is easier and faster to process on board (gutting /deheading), equals faster through put
- Pumpable deepchill™ is ideal for boxing at sea in either the slurry or the dry crystal form with less labour required
- Deepchilled fish is stored and landed at 2°C lower core temperature as compared to flake ice
- Quality improvement and longer shelf live.

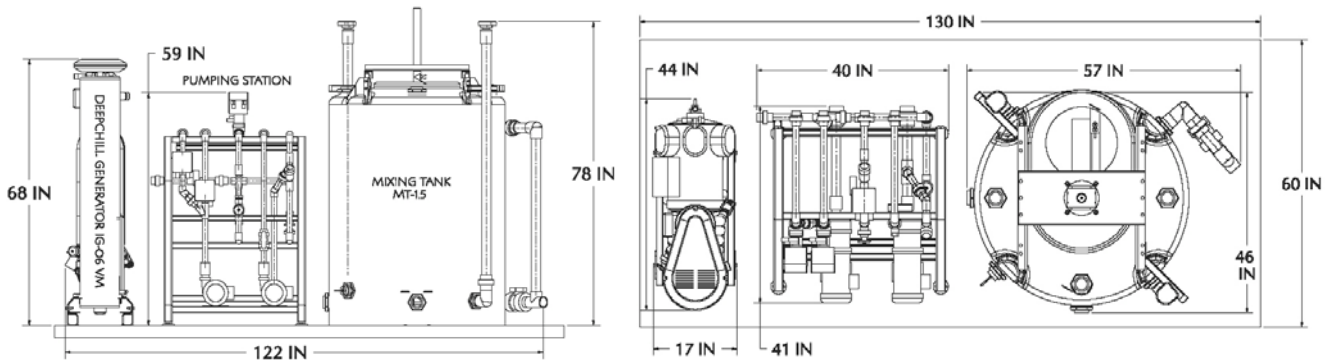


Picture shown: Deepchill™ Compact System

<i>Specifications of Deepchill™ Compact System</i>					
Seawater Temp.	Max Deepchill™ Capacity DC20/30/40: slurry w. 20%,30%,40% ice concentration			Parameters	Data
	DC20	DC30	DC40	Electrical Requirement	208V/3Ph/60Hz, 105 min. circuit ampacity
10 °C	12,800 kg/24h	10,100 kg/24h	8,300 kg/24h	Seawater Requirement	180 LPM at min 3-4.5 bar gauge 50 GPM at min 45-65 psig
20 °C	8,000 kg/24h	6,600 kg/24h	5,600 kg/24h	Total Weight	ca. 820 kg (1800 lbs)
30 °C	5,100 kg/24h	4,400 kg/24h	3,800 kg/24h	Max Delivery Rate	4,000 kg/hour

Note: For system capacities under 50 Hz power, apply a multiplier of 0.92

## Dimensions (inches)



Note: Modular components can be installed in separate locations.